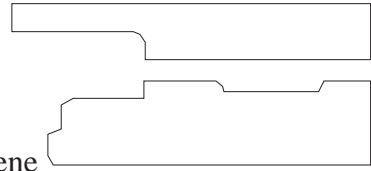


frame, brass rectangular channel; to fit Shay engine, frame is cut at approximately this point, reinforcing brass soldered in

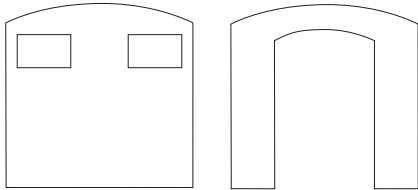
2 - front & back



floorboards, from styrene



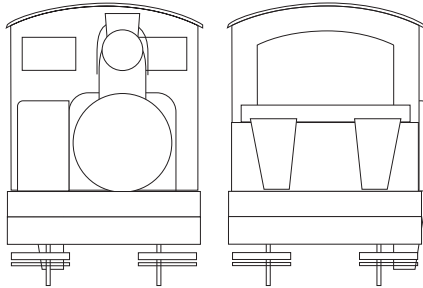
tender shell & top strip, styrene



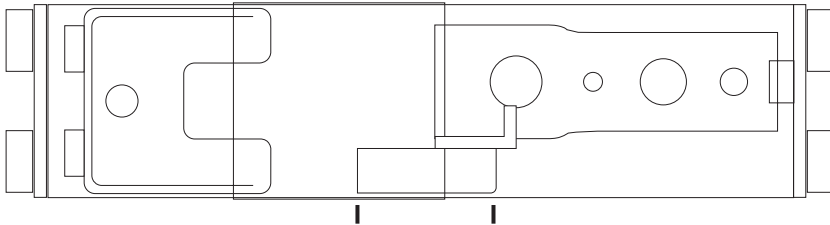
Precision Scale - front & rear end beams, rear sandboxes, bell, pipefittings

Keystone Locomotive Works - Shay engine, sideframes and lineshafts, "logging junk" set provides: headlamp, smokebox front, smokestack, sand & steam dome, tender water hatch

all measurements are approximate, this is a "build-it-to-fit" plan



boiler, sheet & tube brass



scale feet

